



A weekly
publication

December 24, 2023

Published by Your **Timber Valley Log Team**

Input for next week's issue is welcome by Friday, 10 a.m. Please email tvlog@timbervalleysskp.com.

THIS WEEK'S CALENDAR REMINDERS*

Sunday, December 24 @ 2 pm - Chair Volleyball - Big Room
Sunday, December 24 @ 3 pm – Murder Mystery Dinner – Dining Room
Thursday, December 28 @ 5 pm – Old-Time Movie – Dining Room*
Friday, December 29 @ 3 pm - Social Hour w/Speaker - Dining Room
Saturday, December 30 @ 9 am - Coffee & Donuts Social - Dining Room
Saturday, December 30 @ 9:30 am – Writing for Fun – Card Room

(*Keep track of all regularly scheduled weekly activities on online Team-Up calendar)

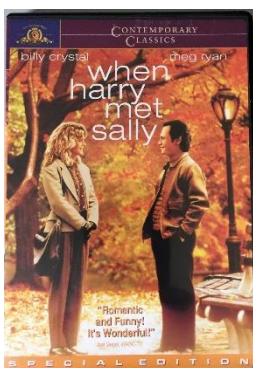
☀ ☀ **December Sunshine Person is Susie Varner – Lot #105 Tel. 541-941-1506** ☀ ☀

Dec. 24 Murder Mystery Dinner - "Who killed Sandy Clause?"

Are you reading this on Sunday, December 24? You may have time to catch the Timber Valley Murder Mystery Dinner from 3 – 6 pm at the Clubhouse. Enjoy dinner created by Chef Denis as you solve the murder. Rumor has it that Cornish game hens are on the menu but like a true sleuth you've got to see it to believe it. So, what are you waiting for? Grab \$5, your own place settings, canned/package foods for the Food Pantry... and head for the Clubhouse!
NOTE: Sandy Clause has already pulled the sign-up list and will check it twice. If you're not on the list, you may have to wait a bit to get dinner.



Dec. 28 Movie Night – "When Harry Met Sally" Romance-Comedy



"Brimming over with style, intelligence and flashing wit" (Rolling Stone), this "splendid and irresistible" (Los Angeles Times) film from director Rob Reiner is one of the best-loved romantic comedies of all time. Featuring dazzling performances from Meg Ryan, Billy Crystal, Carrie Fisher and Bruno Kirby, exceptional music from Harry Connick Jr., and an Oscar-nominated screenplay by Nora Ephron, **When Harry Met Sally** is an "explosively funny" commentary on friendship, courtships, and relationships (Newsweek). Will sex ruin a perfect relationship between a man and a woman? That's what Harry and Sally debate throughout the movie. Will these two best friends ever accept that they're meant for each other...or will they continue to deny the attraction that's existed since the first moment **When Harry Met Sally**?

Dec. 29 Social Hour with Food Pantry Director

Come one come all! On Friday 29th at 3pm, the Director of the Sutherlin Oakland Food Pantry, Wendy Bedwell Wilson, will be our speaker. She will speak about the food needs of our community, give a general update, and answer questions prior to the Jan.1 Renew, Restore and Replenish event.



Many Hands Make Light Work



Melinda, Dick, Dar, and Rhonda went to the Sutherlin Fire Station to help wrap children's toys, many of which were purchased and donated by park members. Several high school students helped as well. Proving the saying "Many hands make light work" they got everything wrapped in one day instead of two. The firefighters appreciated the help and even bought them lunch. Thanks to Dar Hoch for coordinating this activity for park members.

Clearing Park Drainage Ditches

At last month's PCM meeting, Marc Stalnaker and Dave Van Westen volunteered to do some maintenance work on the drainage ditches. Many ditches have had gravel filled in, resulting in poor drainage. It's hard work clearing the ditches, so our two volunteers can only work around an hour at a time. They started at lot #1 (Pheasant Hill) and last week ended at lot #87 (State Canyon). "The water roars through my ditch now that the downstream ditches are clean!" Marc noted. The duo has identified several other ditches that need work. If you want to volunteer, contact Dave at 714-625-2334.



MARK YOUR CALENDARS.... NEW YEAR'S DAY – JANUARY 1ST!!!

Renew, Restore, and Replenish Party to benefit the Sutherlin Food Bank. Starting 2 pm, football (on the big screen), card games, and food with lots of fun and fellowship. Bring hearty snacks to share with friends and neighbors. Chef Denis will provide chili and cornbread. Bring your own tableware, \$5++ for food and 50/50 drawing, and canned or packaged goods. All monies and goods will go to the Food Bank. Questions to Joy 541-343-8283.