

## **Our Region Offers:**

**fishing - lake, stream and  
ocean**



**hiking, biking, great day trips.**



**Coastal views and beaches just  
70 miles west.**

**Wildlife Safari, 21 miles south**



**Wineries, near and far.**

**7 Feathers Casino, just 37 miles  
to the south and several others  
on the coast and to the east.**

**We are in the heart of Oregon's  
beautiful timber country, full of  
managed forests providing  
wood products shipped the  
world around.**

## **Our City**

**Sutherlin, Oregon 97479**

**Population: 8,524**

**On I-5 exits 135 and 136**



**Known as the City of Flags**



**Home of the largest electric  
vehicle recharging station  
between San Francisco and  
Seattle on I-5 at exit 136.**

## **Sutherlin City Park**



**Entertainment  
under a new and  
special dome for  
concerts, etc.  
through the  
warm weather  
months**

**A popular  
splash pool  
enjoyed when  
the weather is  
hot.**

**Plus lots more.**



## **Timber Valley SKP PARK Of Oregon, INC**



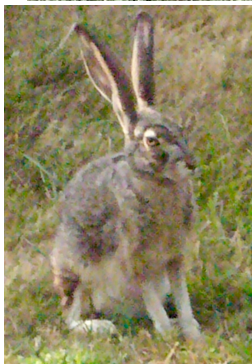
**800 S State Street  
Sutherlin, Oregon 97479**

**Located in the beautiful  
Umpqua Valley of Oregon  
Conveniently off I-5  
at exits 135 and 136  
Follow our website:  
[timbervalleyskp.com](http://timbervalleyskp.com)**





## ***We Love Our Wild Life***



***But we  
don't feed  
them!***

***We'll love your furry pets too,  
which we know you will keep on  
a leash. They'll enjoy our fenced  
Dog Park, as will you!***



***We are a cooperative park,  
which means our members will  
participate in activities, planning  
and upkeep of the park.***

***We are governed by an elected  
Board of Directors.***

***We have many committees to get  
the work done:***

***Activity, Audit, Budget, Bylaws  
and Rules & Regulations,  
Communication. Election,  
Grievance, Landscape,  
Lot Improvement, Mail,  
New Membership Orientation,  
Planning, Construction and  
Maintenance, Website, WiFi.***

### ***Special Groups***

***Cooking Group***

***Community Garden Group***

***Sewing and Craft Groups***

### ***We Play A Lot***

***Our members enjoy:***

***Mens and Ladies Pool***

***Pickle Ball, Chair Volleyball,***

***Bocce Ball, Horse Shoes, Bingo,***

***Card Games including Poker,***

***Pinochle, Pegs & Jokers, PoKeNo***

***Mahjongg, Board Games and  
more.***

### ***We Keep Fit***

***Walking, Hiking and Biking on our  
own Timber Valley Trail  
in the woods.***

***QiGong sessions 3 X weekly  
Exercise equipment.***

